

RHAPSODY FOR VIOLIN

William Neil

$\text{♩} = 40$ 17

Solo Vln. f ff

A

20 A little faster $\text{♩} = \text{c. } 132$

sfp 11

35

fff ff f sfp $< f$ f

40 $\text{♩} = \text{♩}$ $\text{♩} = \text{♩}$ $\text{♩} = \text{♩}$ $\text{♩} = \text{♩}$

p $f < ff$

46 $\text{♩} = \text{♩}$ 2 $\text{♩} = \text{♩}$

ff $sfp < f$ $> p <$

B

52 A little faster $\text{♩} = 144$

56 2 **C** 7

f p ff

69 2

f p ff p

HORN I in F

77 **D**

sfp *f* *ff* *ff*

82 *p* *ff* slowing down *p*

87 **E**
Much slower ♩ = 80

f *p* *f* *sfp* *f*

95 Twice as fast ♩ = ♩

f 3 6

98 ♩ = ♩ ♩ = 52 7

p

107 **F**
Slower ♩ = ♩ = c. 52

ff 2 *f*

113 *p* 3 *ff*

117 Slower 2 *fff* *attaca*

122 ♩ = 108

f *p* *p* *f* 10

136

f *p* *f* *p* *f* *p*

145

f *p* *ff* *p* *slowing down*

153

ff *p* *slowing down* *f* *p*

169

sfz *f* *ff*

176

f

188

p *f* *p*

193

mf *ff* *p* *pp*

202

f *p* *f*

207

p *f* *sfz* *f*

292

p *f* *ff*

HORN I in F

297 **Slower** **P**

ppp sf p f

305 *f*

313 *ff f p*

321 **3** **Q** **Faster** **Slower** **4**

ff

R *J. = 48*

ff < f *slowing down* *f* *p*

338 **S** *4* *J. = J* *6*

p

351 *3* *3* *J. = J* *7* *J. = 108* *3*

f *gradually becoming faster*

364 **T** **Slower** *J. = 88* **2**

ff

370 **3** **4**

f *f* *gradually slowing*

382 $\text{♩} = 40$

f *ff* *f* *p* *f* *p*

387

p *< f* *p* *p* *ff*

392 **U** Cadenza

395 **V** $\text{♩} = 108$

p *ff* *p* *p* *ff* *p* *sfzp* *sfzp*

401 $\text{♩} = \text{♩}$

f *ff* *p*

405

fff *p* *fff* *ffff*

410 **W** Slower $\text{♩} = 48$ 10

f *p*

423 **X** 10 5 5 Solo Vln. moving ahead slowing down

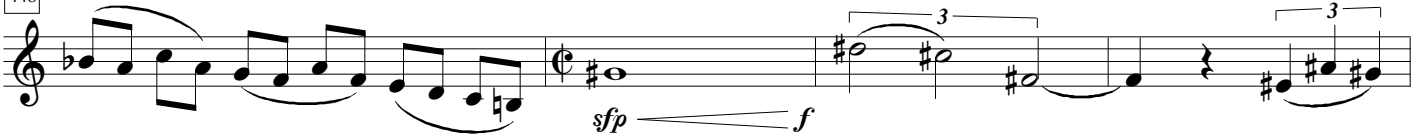
f *p*

Y

444

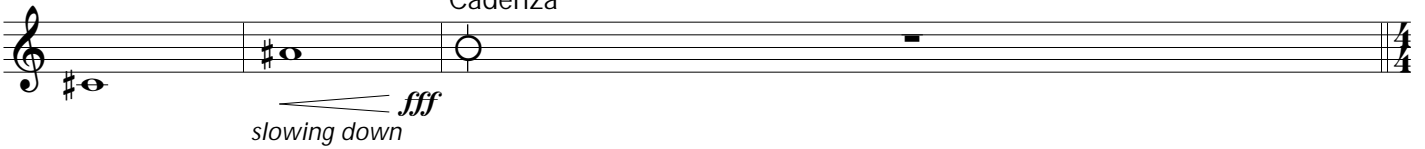
Slower $\text{♩} = 40$ 

448



452

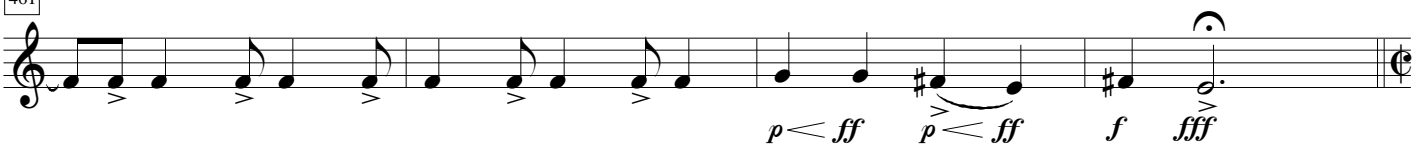
Cadenza



455

 $\text{♩} = 84$ 

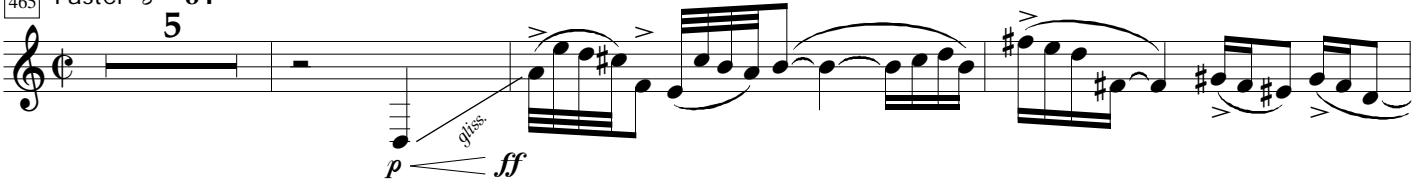
461



465

Faster $\text{♩} = 84$

5



473



480



484

